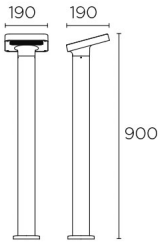


### PILE Beacon

Designer: Nahtrang Design



#### Description

Bollard for outdoor use.

For downlighting. Structure material: High purity aluminium. Structure finish: Grey. Diffuser material: Polycarbonate. Diffuser finish: Prismatic. UV protection. Warranty: 2 Years.

#### Finish

Grey  
Prismatic

#### Material

High purity aluminium  
Polycarbonate



#### TECHNICAL CHARACTERISTICS

##### Light source

Light source: LED CREE  
Output (W): 8W  
Total power consumption (W): 12W  
Color temperature: Warm White - 3000K  
CRI: 80  
Photobiological risk: RG2  
Real Lumen: 418  
Qty Leds: 8  
Lm/Real W: 35  
Life Time: 50.000h L70B30  
MacAdam steps: 2  
UGR: 20.0

##### GEAR

Brand: EAGLERISE  
Gear included: Yes, electronic  
Voltage / Frequency: 100-240 VAC  
Power Factor: 0.40

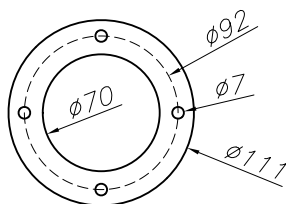
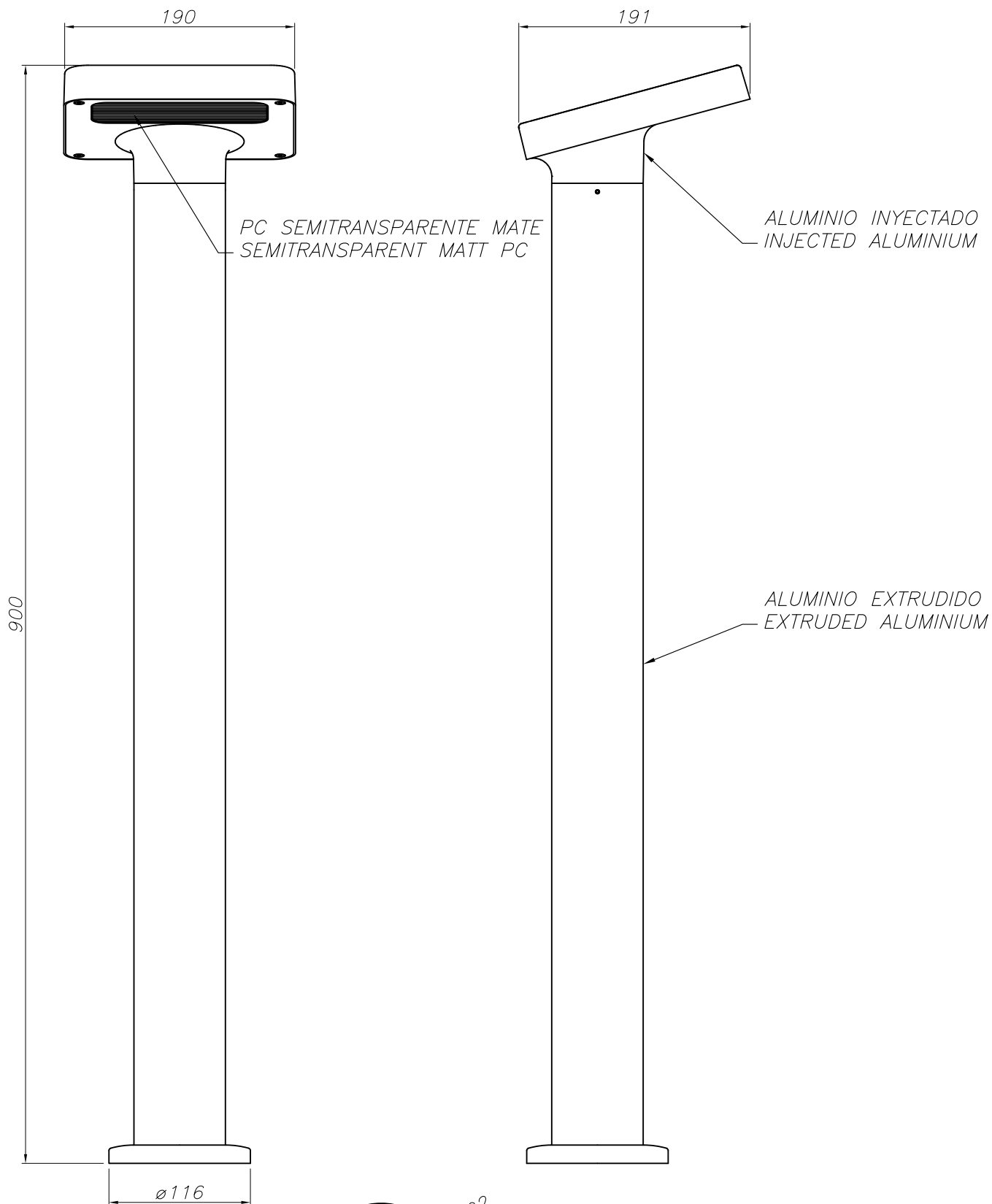
##### Luminaire

Double cable exit: No  
Drainage: No  
Uv Protection: Yes  
Warranty: 2 Years

##### Logistics

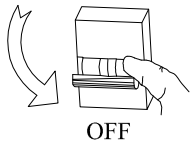
Energy Efficiency: LED A++  
EAN Code: 8435381421052  
Net Weight (Kg): 2.395  
Weight in Kg (packaged): 3.595  
Packing: 915 x 200 x 200  
Masterbox: 2

The photograph may not match the reference exactly. Please read the product description to identify the finish.

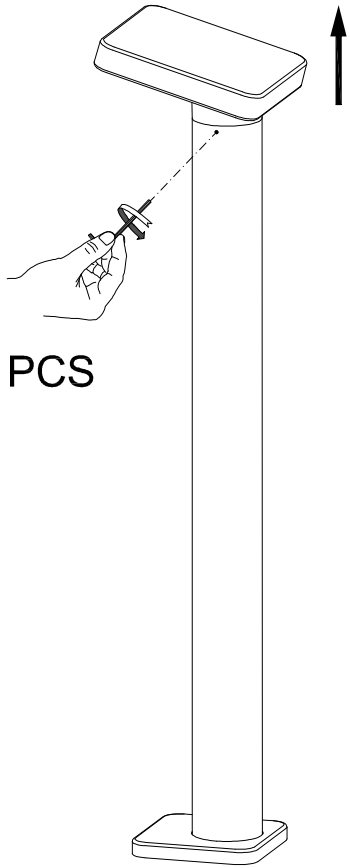


PLANTILLA DE INSTALACI3N  
INSTALLATION TEMPLATE

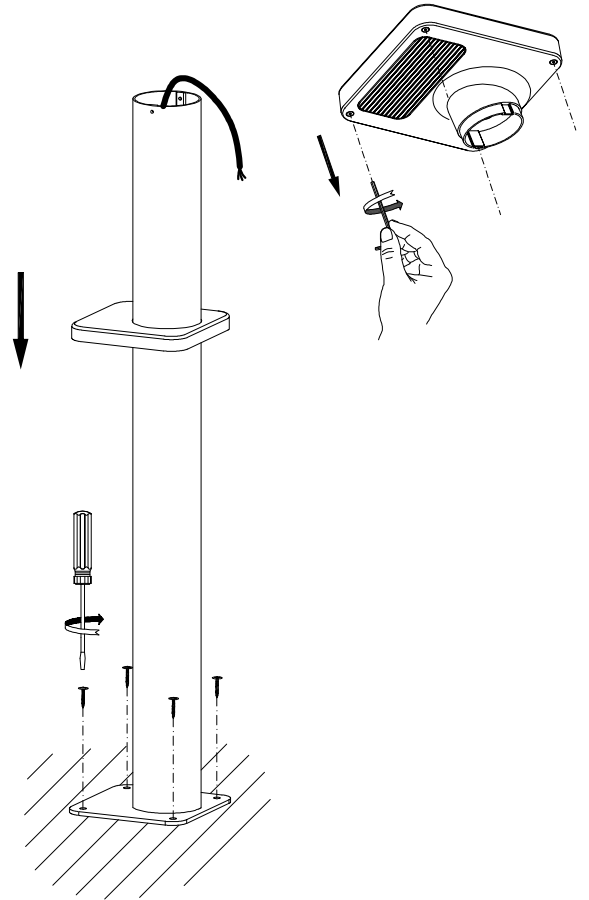
①



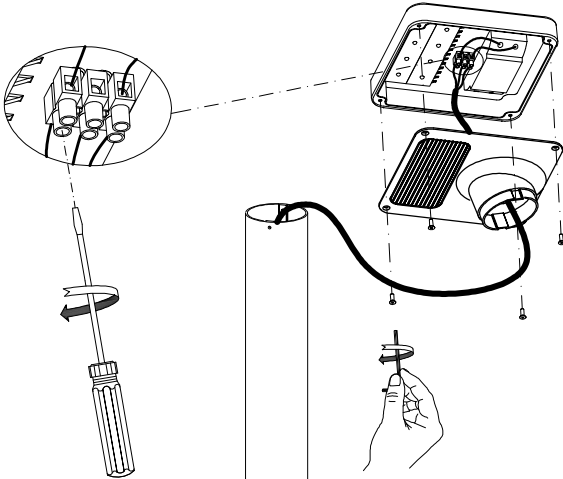
X2 PCS



②



③



④

X2 PCS

