

### SIMENTI Beacon



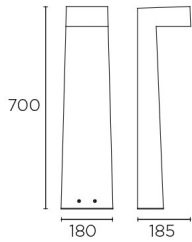
#### Description

Wall light for outdoor use.

For downlighting. Suitable for installation in marine environments. Structure material: cement. Structure finish: cement. Diffuser material: Glass. Diffuser finish: Sandblasted. UV protection. Warranty: 5 Years.

**Finish**  
cement  
Sandblasted

**Material**  
cement  
Glass



#### TECHNICAL CHARACTERISTICS

##### Light source

Light source: LED LUMILEDS  
Output (W): 9W  
Color temperature: Warm White - 3000K  
CRI: 80  
Real Lumen: 597  
Qty Leds: 20  
Lm/Real W: 66  
Life Time: 50.000h L90B10  
Bin / Grup: 7D  
MacAdam steps: 3  
UGR: 25.9  
Photobiological risk: RG0

##### GEAR

Brand: EAGLERISE  
Gear included: Yes, electronic  
Voltage / Frequency:  
100-240VAC/50-60Hz  
Power Factor: 0.90

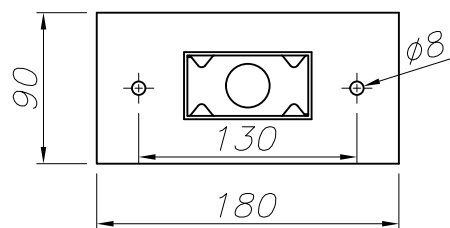
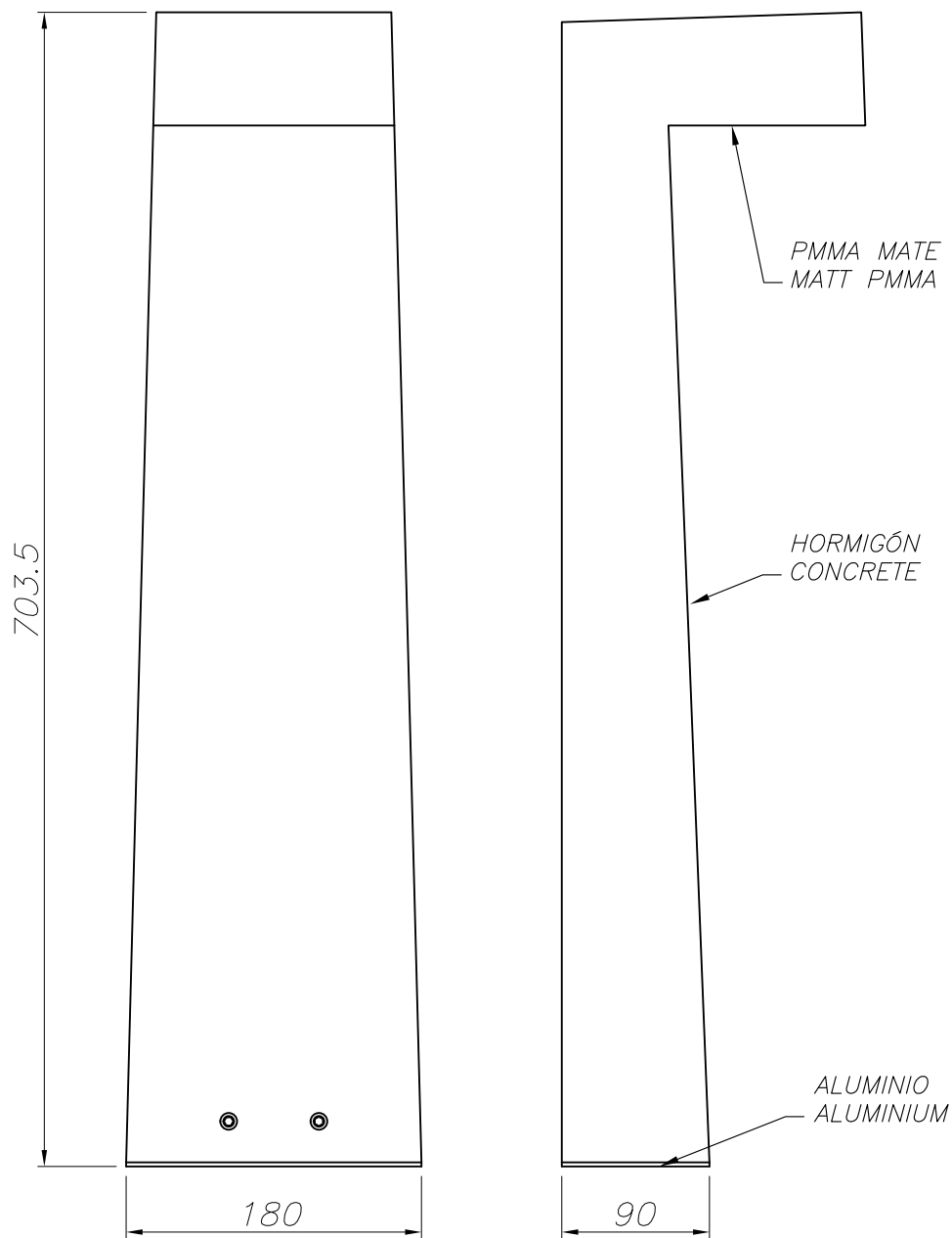
##### Luminaire

Double cable exit: No  
Drainage: No  
Seaside: Yes  
Uv Protection: Yes  
Warranty: 5 Years

##### Logistics

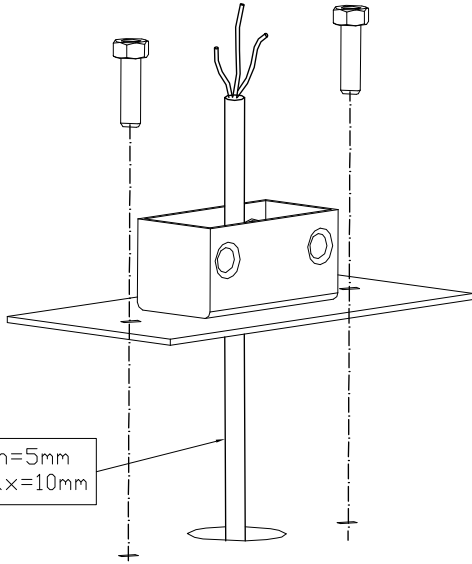
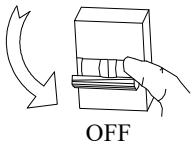
Energy Efficiency: LED A++  
EAN Code: 8435381463441  
Net Weight (Kg): 18.565  
Weight in Kg (packaged): 19.680  
Packing: 780 x 285 x 300  
Masterbox: 1

The photograph may not match the reference exactly. Please read the product description to identify the finish.

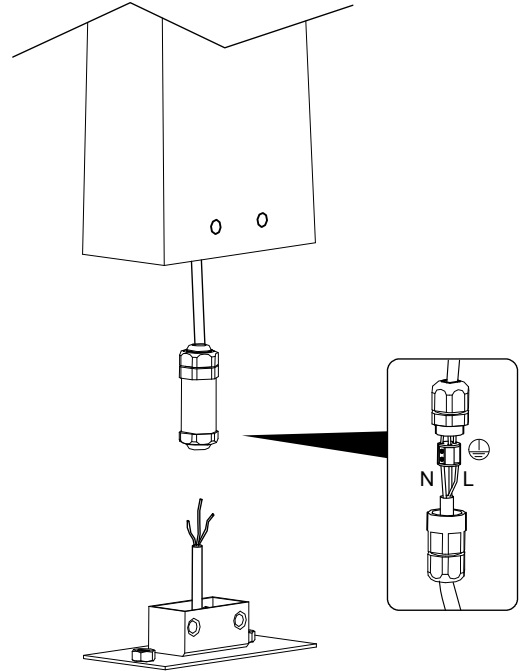


PLANTILLA DE INSTALACIÓN  
INSTALLATION TEMPLATE

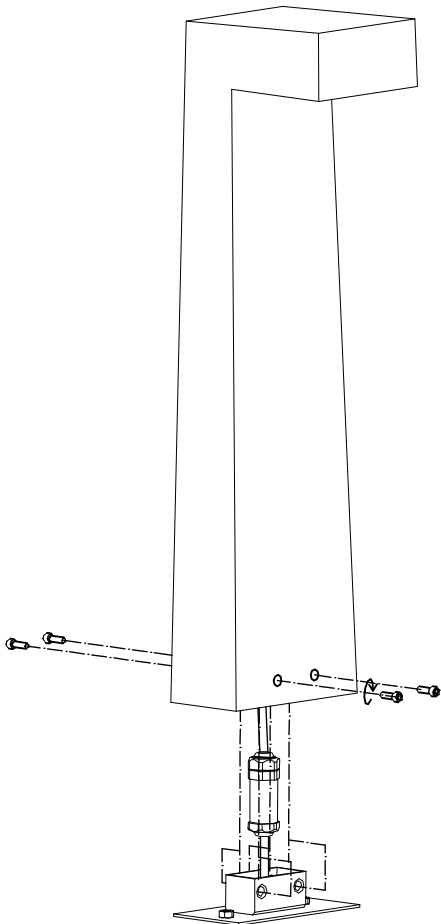
①



②



③



④

